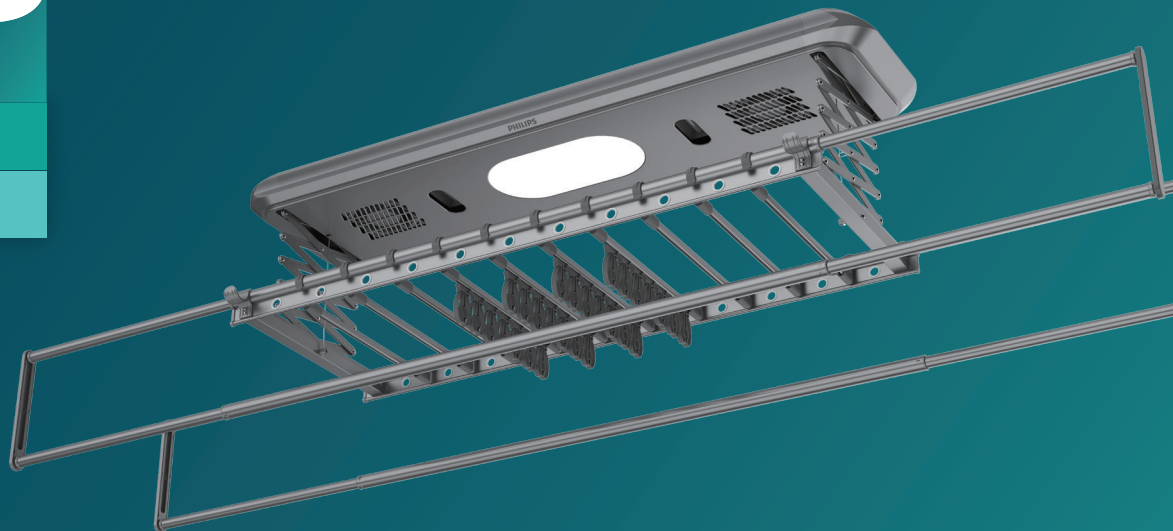


PHILIPS

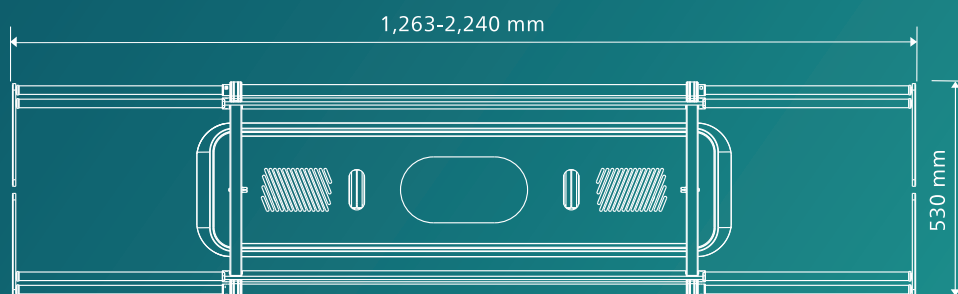
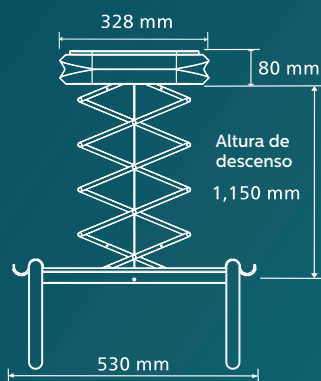
7000 Series

Smart drying rack

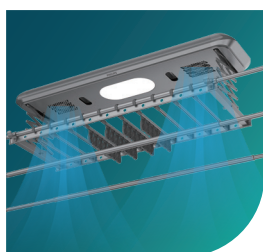
SDR 105



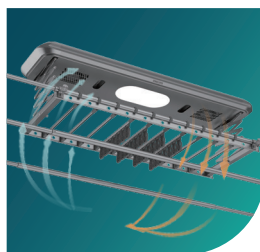
Dimensiones & Especificaciones



Modelo	SDR 105	Medidas	1,311(L) × 328(W) × 80(H) mm
Potencia luz LED	16 W	Largo de la barra	Expandible de 1,263 a 2,240 mm
Consumo de luz	620 W	Altura de descenso	1,150 mm
Capacidad de carga	35 kg	Color	Gris brillante



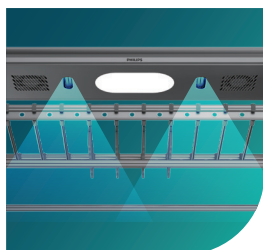
2 modos de
secado por
aire



Secado por calor
inteligente



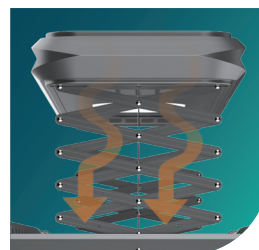
Control por APP



Desinfección
efectiva



DC motor



Estructura
estable